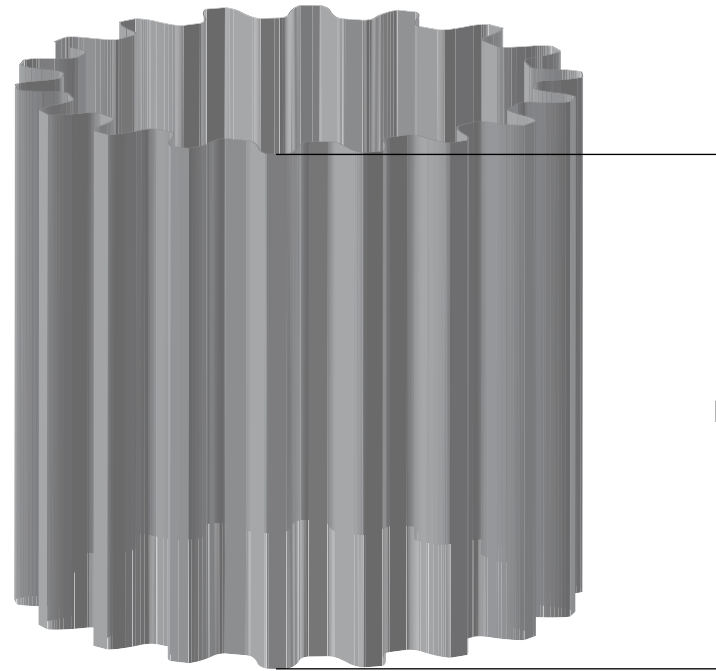
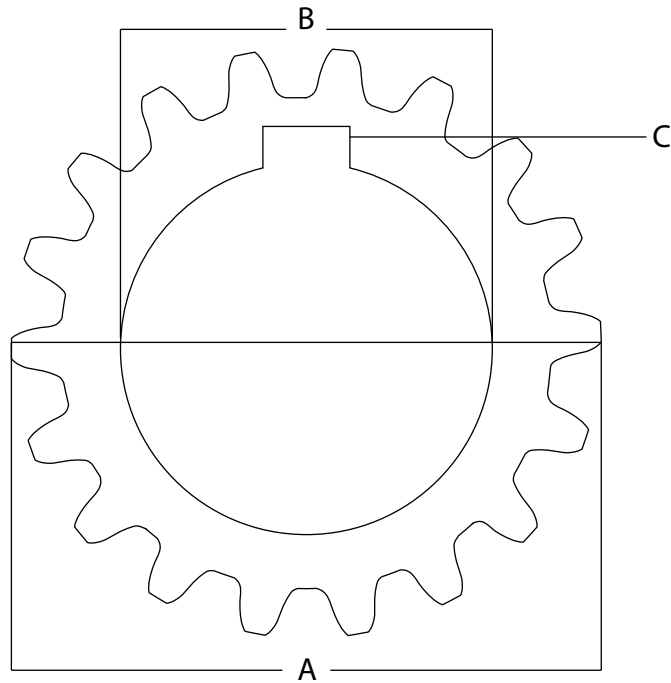


LADDER BELT SPROCKET



Tegman

(PTY) LTD

PROUDLY LEVEL 2 B-BBEE (52%)

Reg. No: 2017/309886/07 VAT No: 4770280362

HEAD OFFICE DURBAN

Tel: 031 563 4252
Office Cell: 072 299 4947
Email: sales@tegman.co.za
Website: www.tegman.co.za
Physical Address: Unit 31 Victoria Park,
123-127 Old North Coast Road, Glen Anil
P.O. Box 201897, Durban North, 4016

GAUTENG:

Cell: 067 008 5354

NELSPRUIT:

Cell: 068 533 4089

CAPE TOWN:

Cell: 063 516 8720

CUSTOMER:

CONTACT PERSON:

CONTACT NUMBER:

EMAIL:

APPROVED FOR MANUFACTURE SIGNATURE:

MEASUREMENTS ARE ALL IN MM

Material:

Quantity:

A - OD:

B - ID:

C - Keyway Depth:

D - Sprocket Width: