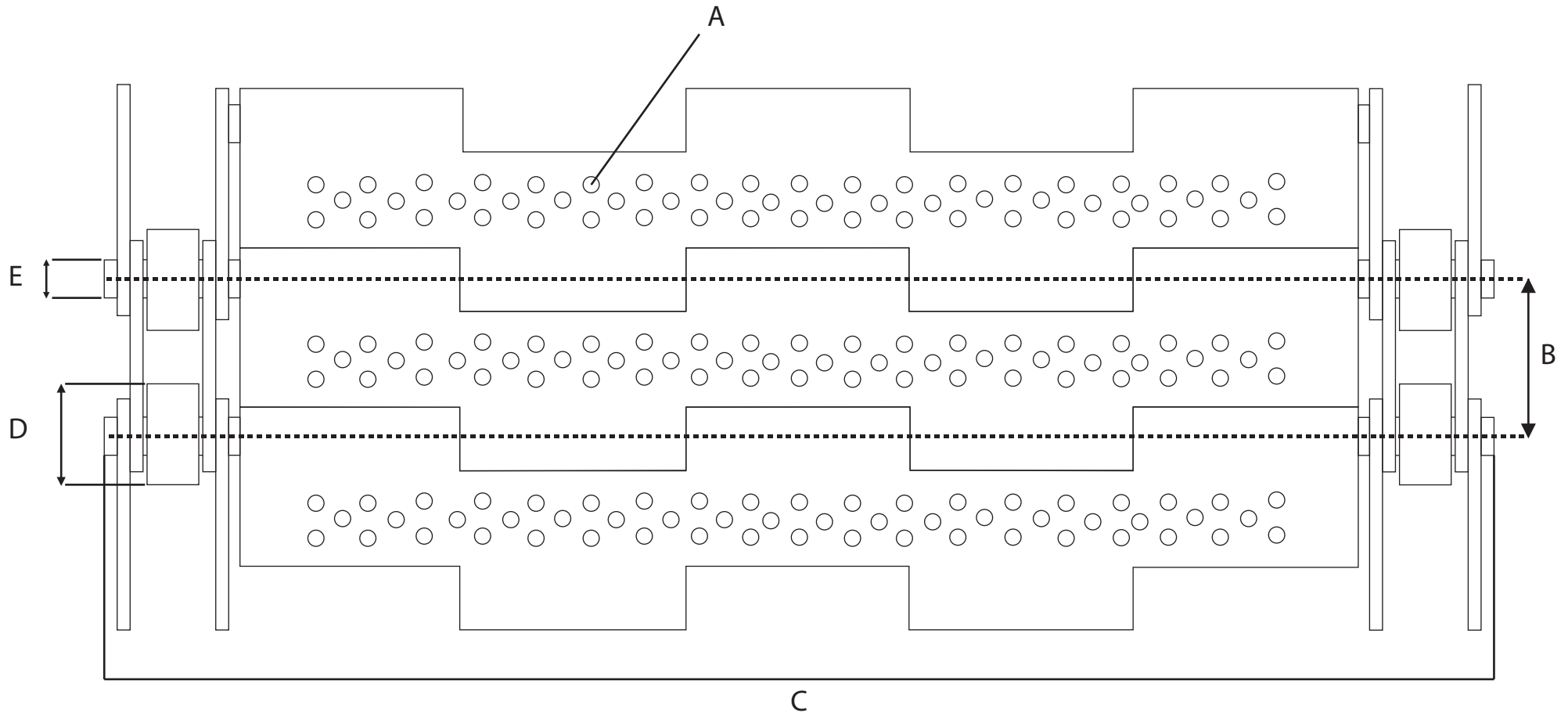


PLATE BELT



Tegman

(PTY) LTD

PROUDLY LEVEL 2 B-BBEE (52%)

Reg. No: 2017/309886/07 VAT No: 4770280362

HEAD OFFICE DURBAN

Tel: 031 563 4252

Office Cell: 072 299 4947

Email: sales@tegman.co.za

Website: www.tegman.co.za

Physical Address: Unit 31 Victoria Park,
123-127 Old North Coast Road, Glen Anil

P.O. Box 201897, Durban North, 4016

GAUTENG:

Cell: 067 008 5354

NELSPRUIT:

Cell: 068 533 4089

CAPE TOWN:

Cell: 065 817 1415

CUSTOMER:

CONTACT PERSON:

CONTACT NUMBER:

EMAIL:

APPROVED FOR MANUFACTURE SIGNATURE:

MEASUREMENTS ARE ALL IN MM

BELT LENGTH:

A - OPENING SIZE:

B - PITCH:

C - OVERALL BELT WIDTH:

D - ROLLER DIA.:

E - ROD DIA.: